

ACI Racing Weekend Imola, 22-23 Aprile 2023

Italian F4 Championship - Results Free Practice 2

Imola Circuit 4.909 m

1 / 2

| No. | Driver | Nat | Entrant | Team | Car | Class | Time | Gap | Rel. | Laps |
|-----|--------------------------------------|-----|-----------------------|-----------------------------|----------------|-------|-----------------|-------|-------|------|
| 1 | 37 SZTUKA Kacper | POL | US Racing | US Racing (DEU) | Tatuus F4-T421 | | 1'43.643 | | | 12 |
| 2 | 3 UGOCHUKWU Ugo | USA | Prema Racing | Prema Racing (ITA) | Tatuus F4-T421 | | 1'43.656 | 0.013 | 0.013 | 13 |
| 3 | 20 DAVID Zachary | MLT | US Racing | US Racing (DEU) | Tatuus F4-T421 | R | 1'43.830 | 0.187 | 0.174 | 13 |
| 4 | 8 TAPONEN Tuukka | FIN | Prema Racing | Prema Racing (ITA) | Tatuus F4-T421 | R | 1'43.926 | 0.283 | 0.096 | 12 |
| 5 | 13 WHARTON James | AUS | Prema Racing | Prema Racing (ITA) | Tatuus F4-T421 | | 1'43.930 | 0.287 | 0.004 | 13 |
| 6 | 31 BOHRA Akshay | SGP | US Racing | US Racing (DEU) | Tatuus F4-T421 | R | 1'44.258 | 0.615 | 0.328 | 13 |
| 7 | 23 LINDBLAD Arvid | GBR | Prema Racing | Prema Racing (ITA) | Tatuus F4-T421 | R | 1'44.280 | 0.637 | 0.022 | 12 |
| 8 | 47 LACORTE Nicola | ITA | Prema Racing | Prema Racing (ITA) | Tatuus F4-T421 | R | 1'44.316 | 0.673 | 0.036 | 13 |
| 9 | 17 DINGUES Ivan | POR | Van Amersfoort Racing | Van Amersfoort Racing (NLD) | Tatuus F4-T421 | | 1'44.340 | 0.697 | 0.024 | 17 |
| 10 | 29 ELKIN Ariel | ISR | Jenzer Motorsport | Jenzer Motorsport (CHE) | Tatuus F4-T421 | R | 1'44.415 | 0.772 | 0.075 | 16 |
| 11 | 9 SPINA Alfio | ITA | BVM Racing | BVM Racing (ITA) | Tatuus F4-T421 | | 1'44.462 | 0.819 | 0.047 | 16 |
| 12 | 14 AL DHAHERI Rashid | UAE | Prema Racing | Prema Racing (ITA) | Tatuus F4-T421 | R | 1'44.489 | 0.846 | 0.027 | 12 |
| 13 | 15 BADOER Brando | ITA | Van Amersfoort Racing | Van Amersfoort Racing (NLD) | Tatuus F4-T421 | | 1'44.496 | 0.853 | 0.007 | 16 |
| 14 | 10 KLUSS Valentin | DEU | PHM Racing | PHM Racing (DEU) | Tatuus F4-T421 | | 1'44.515 | 0.872 | 0.019 | 16 |
| 15 | 7 FERREIRA Matheus | BRA | Van Amersfoort Racing | Van Amersfoort Racing (NLD) | Tatuus F4-T421 | R | 1'44.555 | 0.912 | 0.040 | 16 |
| 16 | 48 EGOZI James | USA | PHM Racing | PHM Racing (DEU) | Tatuus F4-T421 | R | 1'44.637 | 0.994 | 0.082 | 14 |
| 17 | 22 DELIGNY Enzo | FRA | AKM Motorsport | AKM Motorsport (SMR) | Tatuus F4-T421 | R | 1'44.666 | 1.023 | 0.029 | 15 |
| 18 | 85 DE PALO Matteo | ITA | R-ace GP | R-ace GP (FRA) | Tatuus F4-T421 | R | 1'44.720 | 1.077 | 0.054 | 16 |
| 19 | 88 PEEBLES Griffin Forrest | AUT | AKM Motorsport | AKM Motorsport (SMR) | Tatuus F4-T421 | R | 1'44.751 | 1.108 | 0.031 | 15 |
| 20 | 66 LIU Ruiqi | CHN | US Racing | US Racing (DEU) | Tatuus F4-T421 | R | 1'44.774 | 1.131 | 0.023 | 12 |
| 21 | 12 PRADEL Gianmarco | AUS | US Racing | US Racing (DEU) | Tatuus F4-T421 | R | 1'44.812 | 1.169 | 0.038 | 13 |
| 22 | 16 NOBELS Aurelia Corine | BEL | Prema Racing | Prema Racing (ITA) | Tatuus F4-T421 | | 1'44.900 | 1.257 | 0.088 | 12 |
| 23 | 27 ISCHER Ethan | CHE | Jenzer Motorsport | Jenzer Motorsport (CHE) | Tatuus F4-T421 | | 1'44.940 | 1.297 | 0.040 | 15 |
| 24 | 26 KIM Hwarang | KOR | Jenzer Motorsport | Jenzer Motorsport (CHE) | Tatuus F4-T421 | | 1'44.990 | 1.347 | 0.050 | 17 |
| 25 | 21 HAUSMANN Tina | CHE | AKM Motorsport | AKM Motorsport (SMR) | Tatuus F4-T421 | R | 1'45.010 | 1.367 | 0.020 | 17 |
| 26 | 45 BEETON Jack | AUS | Van Amersfoort Racing | Van Amersfoort Racing (NLD) | Tatuus F4-T421 | R | 1'45.018 | 1.375 | 0.008 | 15 |
| 27 | 57 BHIROMBHAKDI Nandavhud | THA | PHM Racing | PHM Racing (DEU) | Tatuus F4-T421 | | 1'45.038 | 1.395 | 0.020 | 17 |
| 28 | 5 LARINI Davide | ITA | AKM Motorsport | AKM Motorsport (SMR) | Tatuus F4-T421 | R | 1'45.317 | 1.674 | 0.279 | 14 |
| 29 | 19 CARRASQUEDO Jesse | MEX | BVM Racing | BVM Racing (ITA) | Tatuus F4-T421 | | 1'45.442 | 1.799 | 0.125 | 15 |
| 30 | 78 BLOKHINA Viktoria | | PHM Racing | PHM Racing (DEU) | Tatuus F4-T421 | | 1'45.455 | 1.812 | 0.013 | 16 |
| 31 | 76 NARAC Raphael | FRA | R-ace GP | R-ace GP (FRA) | Tatuus F4-T421 | | 1'45.700 | 2.057 | 0.245 | 11 |
| 32 | 93 QUINTARELLI Matteo | UAE | R-ace GP | R-ace GP (FRA) | Tatuus F4-T421 | R | 1'45.847 | 2.204 | 0.147 | 12 |
| 33 | 11 AKHMEDKHODJAEV Ismoilkhuja | UZB | Van Amersfoort Racing | Van Amersfoort Racing (NLD) | Tatuus F4-T421 | | 1'45.857 | 2.214 | 0.010 | 17 |
| 34 | 18 FRASSINETI Andrea | ITA | BVM Racing | BVM Racing (ITA) | Tatuus F4-T421 | | 1'46.044 | 2.401 | 0.187 | 16 |
| 35 | 61 WIEBELHAUS Finn | DEU | AS Motorsport | AS Motorsport (SLO) | Tatuus F4-T421 | | 1'46.627 | 2.984 | 0.583 | 16 |
| 36 | 63 LUCHETTI Guido | ITA | Airflow Racing | Airflow Racing (ITA) | Tatuus F4-T421 | R | 1'47.305 | 3.662 | 0.678 | 15 |
| 37 | 62 QUONDAMCARLO Manuel | ITA | AS Motorsport | AS Motorsport (SLO) | Tatuus F4-T421 | | 1'47.653 | 4.010 | 0.348 | 16 |

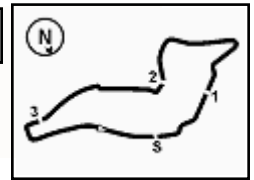
| | | | |
|------------|-----|-------|------|
| Humidity: | 65% | AIR | 18°C |
| Condition: | DRY | Track | 23°C |

Clerk of the Course : Massimiliano Ghinassi

Race Director : Alessandro Ferrari

| | | |
|------------|-------|-------|
| | Start | End |
| 21/04/2023 | 12:54 | 13:35 |




ACI Racing Weekend Imola, 22-23 Aprile 2023
Italian F4 Championship - Results Free Practice 2
Penalty and Infringement

| | | | |
|-------|-----------|------------------------|---|
| 13.00 | 57 | N. BHIROMBHAKDI | Time Deleted (1'46.139) - Exceeded Track Limits - Turn 10 |
| 13.02 | 57 | N. BHIROMBHAKDI | Time Deleted (1'46.037) - Exceeded Track Limits - Turn 10 |
| 13.02 | 61 | F. WIEBELHAUS | Time Deleted (1'47.385) - Exceeded Track Limits - Turn 10 |
| 13.03 | 5 | D. LARINI | Time Deleted (1'50.473) - Exceeded Track Limits - Turn 10 |
| 13.03 | 15 | B. BADOER | Time Deleted (1'46.265) - Exceeded Track Limits - Turn 13 |
| 13.05 | 85 | M. DE PALO | Time Deleted (1'46.153) - Exceeded Track Limits - Turn 10 |
| 13.05 | 57 | N. BHIROMBHAKDI | Time Deleted (1'45.813) - Exceeded Track Limits - Turn 10 |
| 13.05 | 45 | J. BEETON | Time Deleted (1'52.824) - Exceeded Track Limits - Turn 13 |
| 13.07 | 9 | A. SPINA | Time Deleted (1'47.346) - Exceeded Track Limits - Turn 10 |
| 13.07 | 48 | J. EGOZI | Time Deleted (1'45.413) - Exceeded Track Limits - Turn 10 |
| 13.07 | 18 | A. FRASSINETI | Time Deleted (1'47.169) - Exceeded Track Limits - Turn 10 |
| 13.08 | 7 | M. FERREIRA | Time Deleted (1'45.234) - Exceeded Track Limits - Turn 10 |
| 13.09 | 45 | J. BEETON | Time Deleted (7'44.011) - Exceeded Track Limits - Turn 10 |
| 13.21 | 23 | A. LINDBLAD | Time Deleted (1'47.179) - Exceeded Track Limits - Turn 14 |
| 13.23 | 5 | D. LARINI | Time Deleted (1'46.050) - Exceeded Track Limits - Turn 13 |
| 13.25 | 15 | B. BADOER | Time Deleted (1'44.190) - Exceeded Track Limits - Turn 13 |
| 13.25 | 57 | N. BHIROMBHAKDI | Time Deleted (1'44.719) - Exceeded Track Limits - Turn 13 |
| 13.26 | 20 | Z. DAVID | Time Deleted (1'44.091) - Exceeded Track Limits - Turn 14 |

Fastest Laps Sequence

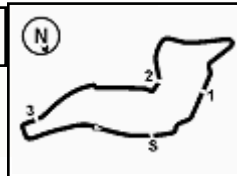
| No. | Entrant | Nat | Team | Car | Local Time | Time | Gap | Avg |
|-----------|------------------------|-----|----------------|----------------|--------------|-----------------|--------|---------|
| 57 | N. BHIROMBHAKDI | THA | PHM Racing | Tatuus F4-T421 | 12:59'11.637 | 1'50.054 | | 160,579 |
| 21 | T. HAUSMANN | CHE | AKM Motorsport | Tatuus F4-T421 | 12:59'41.412 | 1'48.024 | -2.030 | 163,597 |
| 8 | T. TAPONEN | FIN | Prema Racing | Tatuus F4-T421 | 13:00'27.931 | 1'47.797 | -0.227 | 163,941 |
| 78 | V. BLOKHINA | | PHM Racing | Tatuus F4-T421 | 13:01'16.177 | 1'47.079 | -0.718 | 165,041 |
| 21 | T. HAUSMANN | CHE | AKM Motorsport | Tatuus F4-T421 | 13:01'28.091 | 1'46.679 | -0.400 | 165,660 |
| 3 | U. UGOCHUKWU | USA | Prema Racing | Tatuus F4-T421 | 13:01'44.057 | 1'45.247 | -1.432 | 167,914 |
| 20 | Z. DAVID | MLT | US Racing | Tatuus F4-T421 | 13:02'05.115 | 1'45.020 | -0.227 | 168,277 |
| 13 | J. WHARTON | AUS | Prema Racing | Tatuus F4-T421 | 13:02'23.193 | 1'45.011 | -0.009 | 168,291 |
| 3 | U. UGOCHUKWU | USA | Prema Racing | Tatuus F4-T421 | 13:03'28.485 | 1'44.428 | -0.583 | 169,230 |
| 37 | K. SZTUKA | POL | US Racing | Tatuus F4-T421 | 13:05'21.345 | 1'44.403 | -0.025 | 169,271 |
| 3 | U. UGOCHUKWU | USA | Prema Racing | Tatuus F4-T421 | 13:06'57.942 | 1'44.302 | -0.101 | 169,435 |
| 37 | K. SZTUKA | POL | US Racing | Tatuus F4-T421 | 13:07'05.475 | 1'44.130 | -0.172 | 169,715 |
| 37 | K. SZTUKA | POL | US Racing | Tatuus F4-T421 | 13:23'12.199 | 1'44.097 | -0.033 | 169,769 |
| 20 | Z. DAVID | MLT | US Racing | Tatuus F4-T421 | 13:23'13.285 | 1'44.089 | -0.008 | 169,782 |
| 3 | U. UGOCHUKWU | USA | Prema Racing | Tatuus F4-T421 | 13:24'46.543 | 1'43.656 | -0.433 | 170,491 |
| 37 | K. SZTUKA | POL | US Racing | Tatuus F4-T421 | 13:24'55.842 | 1'43.643 | -0.013 | 170,512 |

Clerk of the Course : Massimiliano Ghinassi

Race Director : Alessandro Ferrari

| | | |
|------------|-------|-------|
| | Start | End |
| 21/04/2023 | 12:54 | 13:35 |





ACI Racing Weekend Imola, 22-23 Aprile 2023

Italian F4 Championship - Combined Free Practices

Imola Circuit 4.909 m

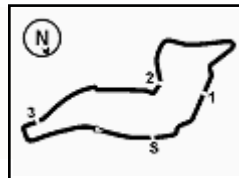
| No. | Driver | Nat | Entrant | Team | Car | Class | FP1 | FP2 | Time | Gap | Rel. | Laps |
|-----|-----------------------------------|-----|-----------------------|-----------------------|----------------|-------|-----------------|-----------------|-----------------|-------|-------|------|
| 1 | 37 SZTUKA Kacper | POL | US Racing | US Racing | Tatuus F4-T421 | | 1'43.855 | 1'43.643 | 1'43.643 | | | 20 |
| 2 | 3 UGOCHUKWU Ugo | USA | Prema Racing | Prema Racing | Tatuus F4-T421 | | 1'44.028 | 1'43.656 | 1'43.656 | 0.013 | 0.013 | 29 |
| 3 | 20 DAVID Zachary | MLT | US Racing | US Racing | Tatuus F4-T421 | R | 1'43.922 | 1'43.830 | 1'43.830 | 0.187 | 0.174 | 22 |
| 4 | 8 SHAPONEN Tuukka | FIN | Prema Racing | Prema Racing | Tatuus F4-T421 | R | 1'44.346 | 1'43.926 | 1'43.926 | 0.283 | 0.096 | 28 |
| 5 | 13 WHARTON James | AUS | Prema Racing | Prema Racing | Tatuus F4-T421 | | 1'44.146 | 1'43.930 | 1'43.930 | 0.287 | 0.004 | 29 |
| 6 | 31 BOHRA Akshay | SGP | US Racing | US Racing | Tatuus F4-T421 | R | 1'44.191 | 1'44.258 | 1'44.191 | 0.548 | 0.261 | 22 |
| 7 | 23 LINDBLAD Arvid | GBR | Prema Racing | Prema Racing | Tatuus F4-T421 | R | 1'44.764 | 1'44.280 | 1'44.280 | 0.637 | 0.089 | 27 |
| 8 | 47 LACORTE Nicola | ITA | Prema Racing | Prema Racing | Tatuus F4-T421 | R | 1'45.071 | 1'44.316 | 1'44.316 | 0.673 | 0.036 | 28 |
| 9 | 17 DOMINGUES Ivan | POR | Van Amersfoort Racing | Van Amersfoort Racing | Tatuus F4-T421 | | 1'44.692 | 1'44.340 | 1'44.340 | 0.697 | 0.024 | 33 |
| 10 | 29 ELKIN Ariel | ISR | Jenzer Motorsport | Jenzer Motorsport | Tatuus F4-T421 | R | 1'45.043 | 1'44.415 | 1'44.415 | 0.772 | 0.075 | 32 |
| 11 | 9 SPINA Alfio | ITA | BVM Racing | BVM Racing | Tatuus F4-T421 | | 1'44.929 | 1'44.462 | 1'44.462 | 0.819 | 0.047 | 33 |
| 12 | 14 AL DHAHERI Rashid | UAE | Prema Racing | Prema Racing | Tatuus F4-T421 | R | 1'44.817 | 1'44.489 | 1'44.489 | 0.846 | 0.027 | 28 |
| 13 | 15 BADOER Brando | ITA | Van Amersfoort Racing | Van Amersfoort Racing | Tatuus F4-T421 | | 1'44.540 | 1'44.496 | 1'44.496 | 0.853 | 0.007 | 32 |
| 14 | 10 KLUSS Valentin | DEU | PHM Racing | PHM Racing | Tatuus F4-T421 | | 1'44.621 | 1'44.515 | 1'44.515 | 0.872 | 0.019 | 32 |
| 15 | 7 FERREIRA Matheus | BRA | Van Amersfoort Racing | Van Amersfoort Racing | Tatuus F4-T421 | R | 1'44.572 | 1'44.555 | 1'44.555 | 0.912 | 0.040 | 35 |
| 16 | 48 EGOZI James | USA | PHM Racing | PHM Racing | Tatuus F4-T421 | R | 1'45.608 | 1'44.637 | 1'44.637 | 0.994 | 0.082 | 28 |
| 17 | 22 DELIGNY Enzo | FRA | AKM Motorsport | AKM Motorsport | Tatuus F4-T421 | R | 1'45.152 | 1'44.666 | 1'44.666 | 1.023 | 0.029 | 31 |
| 18 | 85 DE PALO Matteo | ITA | R-ace GP | R-ace GP | Tatuus F4-T421 | R | 1'44.978 | 1'44.720 | 1'44.720 | 1.077 | 0.054 | 33 |
| 19 | 88 PEEBLES Griffin Forrest | AUT | AKM Motorsport | AKM Motorsport | Tatuus F4-T421 | R | 1'45.425 | 1'44.751 | 1'44.751 | 1.108 | 0.031 | 32 |
| 20 | 66 LIU Ruiqi | CHN | US Racing | US Racing | Tatuus F4-T421 | R | 1'45.013 | 1'44.774 | 1'44.774 | 1.131 | 0.023 | 21 |
| 21 | 12 PRADEL Gianmarco | AUS | US Racing | US Racing | Tatuus F4-T421 | R | 1'45.584 | 1'44.812 | 1'44.812 | 1.169 | 0.038 | 22 |
| 22 | 57 BHIROMBHAKDI Nandav | THA | PHM Racing | PHM Racing | Tatuus F4-T421 | | 1'44.894 | 1'45.038 | 1'44.894 | 1.251 | 0.082 | 35 |
| 23 | 16 NOBELS Aurelia Corine | BEL | Prema Racing | Prema Racing | Tatuus F4-T421 | | 1'45.748 | 1'44.900 | 1'44.900 | 1.257 | 0.006 | 27 |
| 24 | 27 ISCHER Ethan | CHE | Jenzer Motorsport | Jenzer Motorsport | Tatuus F4-T421 | | 1'45.519 | 1'44.940 | 1'44.940 | 1.297 | 0.040 | 31 |
| 25 | 26 KIM Hwarang | KOR | Jenzer Motorsport | Jenzer Motorsport | Tatuus F4-T421 | | 1'46.355 | 1'44.990 | 1'44.990 | 1.347 | 0.050 | 35 |
| 26 | 21 HAUSMANN Tina | CHE | AKM Motorsport | AKM Motorsport | Tatuus F4-T421 | R | 1'45.764 | 1'45.010 | 1'45.010 | 1.367 | 0.020 | 34 |
| 27 | 45 BEETON Jack | AUS | Van Amersfoort Racing | Van Amersfoort Racing | Tatuus F4-T421 | R | 1'45.242 | 1'45.018 | 1'45.018 | 1.375 | 0.008 | 32 |
| 28 | 5 LARINI Davide | ITA | AKM Motorsport | AKM Motorsport | Tatuus F4-T421 | R | 1'45.456 | 1'45.317 | 1'45.317 | 1.674 | 0.299 | 31 |
| 29 | 19 CARRASQUEDO Jesse | MEX | BVM Racing | BVM Racing | Tatuus F4-T421 | | 1'45.399 | 1'45.442 | 1'45.399 | 1.756 | 0.082 | 32 |
| 30 | 78 BLOKHINA Viktoria | | PHM Racing | PHM Racing | Tatuus F4-T421 | | 1'46.152 | 1'45.455 | 1'45.455 | 1.812 | 0.056 | 29 |
| 31 | 76 NARAC Raphael | FRA | R-ace GP | R-ace GP | Tatuus F4-T421 | | 1'45.728 | 1'45.700 | 1'45.700 | 2.057 | 0.245 | 28 |
| 32 | 93 QUINTARELLI Matteo | UAE | R-ace GP | R-ace GP | Tatuus F4-T421 | R | 1'45.981 | 1'45.847 | 1'45.847 | 2.204 | 0.147 | 30 |
| 33 | 11 AKHMEDKHODJAEV Ism | UZB | Van Amersfoort Racing | Van Amersfoort Racing | Tatuus F4-T421 | | 1'46.943 | 1'45.857 | 1'45.857 | 2.214 | 0.010 | 28 |
| 34 | 18 FRASSINETI Andrea | ITA | BVM Racing | BVM Racing | Tatuus F4-T421 | | 1'46.146 | 1'46.044 | 1'46.044 | 2.401 | 0.187 | 34 |
| 35 | 62 QUONDAMCARLO Manu | ITA | AS Motorsport | AS Motorsport | Tatuus F4-T421 | | 1'46.498 | 1'47.653 | 1'46.498 | 2.855 | 0.454 | 35 |
| 36 | 61 WIEBELHAUS Finn | DEU | AS Motorsport | AS Motorsport | Tatuus F4-T421 | | 1'47.028 | 1'46.627 | 1'46.627 | 2.984 | 0.129 | 35 |
| 37 | 63 LUCHETTI Guido | ITA | Airflow Racing | Airflow Racing | Tatuus F4-T421 | R | 1'47.516 | 1'47.305 | 1'47.305 | 3.662 | 0.678 | 33 |

Clerk of the Course : Massimiliano Ghinassi

Race Director : Alessandro Ferrari

21/04/2023





ACI Racing Weekend Imola, 22-23 Aprile 2023

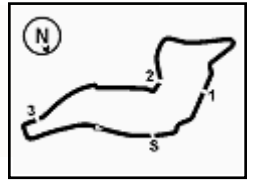
Italian F4 Championship - Ideal Time Free Practice 2

 Imola Circuit 4.909 m
1 / 2

| No. Driver | Car | Seg. 1 Diff. 1 | Seg. 2 Diff. 2 | Seg. 3 Diff. 3 | Seg. 4 Diff. 4 | Ideal Time | | |
|----------------------------|----------------|-------------------|-------------------|-------------------|-------------------|----------------------|------|-------|
| | | | | | | Best Lap | Pos. | Diff. |
| 1 37 SZTUKA K. (POL) | Tatuus F4-T421 | 22.213 +0.016 | 33.317 +0.136 | 29.475 | 18.486 | 1'43.491 1'43.643 | 1 | 0.152 |
| 2 3 UGOCHUKWU U. (USA) | Tatuus F4-T421 | 22.214 +0.036 | 33.328 | 29.524 | 18.554 | 1'43.620 1'43.656 | 2 | 0.036 |
| 3 13 WHARTON J. (AUS) | Tatuus F4-T421 | 22.300 +0.022 | 33.249 | 29.720 +0.154 | 18.485 | 1'43.754 1'43.930 | 5 | 0.176 |
| 4 20 DAVID Z. (MLT) | Tatuus F4-T421 | 22.292 | 33.362 | 29.499 +0.032 | 18.626 +0.019 | 1'43.779 1'43.830 | 3 | 0.051 |
| 5 8 TAPONEN T. (FIN) | Tatuus F4-T421 | 22.249 | 33.355 | 29.639 +0.103 | 18.580 | 1'43.823 1'43.926 | 4 | 0.103 |
| 6 15 BADOER B. (ITA) | Tatuus F4-T421 | 22.234 +0.161 | 33.416 +0.370 | 29.650 | 18.665 | 1'43.965 1'44.496 | 13 | 0.531 |
| 7 31 BOHRA A. (SGP) | Tatuus F4-T421 | 22.377 +0.037 | 33.319 +0.172 | 29.710 | 18.643 | 1'44.049 1'44.258 | 6 | 0.209 |
| 8 23 LINDBLAD A. (GBR) | Tatuus F4-T421 | 22.260 +0.157 | 33.494 | 29.769 | 18.600 | 1'44.123 1'44.280 | 7 | 0.157 |
| 9 47 LACORTE N. (ITA) | Tatuus F4-T421 | 22.423 +0.065 | 33.564 | 29.703 | 18.561 | 1'44.251 1'44.316 | 8 | 0.065 |
| 10 17 DOMINGUES I. (POR) | Tatuus F4-T421 | 22.339 +0.026 | 33.626 +0.027 | 29.684 | 18.638 | 1'44.287 1'44.340 | 9 | 0.053 |
| 11 57 BHIROMBHAKDI N. (TH) | Tatuus F4-T421 | 22.345 +0.207 | 33.567 +0.317 | 29.683 +0.208 | 18.711 | 1'44.306 1'45.038 | 27 | 0.732 |
| 12 9 SPINA A. (ITA) | Tatuus F4-T421 | 22.395 | 33.607 +0.088 | 29.671 +0.019 | 18.667 +0.015 | 1'44.340 1'44.462 | 11 | 0.122 |
| 13 29 ELKIN A. (ISR) | Tatuus F4-T421 | 22.350 +0.059 | 33.572 +0.002 | 29.830 | 18.602 | 1'44.354 1'44.415 | 10 | 0.061 |
| 14 7 FERREIRA M. (BRA) | Tatuus F4-T421 | 22.409 +0.057 | 33.569 +0.075 | 29.706 | 18.705 +0.034 | 1'44.389 1'44.555 | 15 | 0.166 |
| 15 14 AL DHAHERI R. (UAE) | Tatuus F4-T421 | 22.424 +0.014 | 33.560 | 29.808 | 18.638 +0.045 | 1'44.430 1'44.489 | 12 | 0.059 |
| 16 10 KLUSS V. (DEU) | Tatuus F4-T421 | 22.326 | 33.728 | 29.725 +0.033 | 18.703 | 1'44.482 1'44.515 | 14 | 0.033 |
| 17 88 PEEBLES G. (AUT) | Tatuus F4-T421 | 22.374 | 33.745 | 29.776 +0.096 | 18.655 +0.105 | 1'44.550 1'44.751 | 19 | 0.201 |
| 18 85 DE PALO M. (ITA) | Tatuus F4-T421 | 22.480 | 33.668 +0.004 | 29.837 | 18.631 +0.100 | 1'44.616 1'44.720 | 18 | 0.104 |
| 19 48 EGOZI J. (USA) | Tatuus F4-T421 | 22.414 | 33.717 | 29.722 | 18.784 | 1'44.637 1'44.637 | 16 | |
| 20 22 DELIGNY E. (FRA) | Tatuus F4-T421 | 22.554 | 33.547 | 29.881 | 18.684 | 1'44.666 1'44.666 | 17 | |
| 21 66 LIU R. (CHN) | Tatuus F4-T421 | 22.557 | 33.564 | 29.840 +0.047 | 18.742 +0.024 | 1'44.703 1'44.774 | 20 | 0.071 |
| 22 12 PRADEL G. (AUS) | Tatuus F4-T421 | 22.460 | 33.652 | 29.905 | 18.690 +0.105 | 1'44.707 1'44.812 | 21 | 0.105 |
| 23 16 NOBELS A. (BEL) | Tatuus F4-T421 | 22.513 +0.078 | 33.728 | 29.845 | 18.732 +0.004 | 1'44.818 1'44.900 | 22 | 0.082 |
| 24 26 KIM H. (KOR) | Tatuus F4-T421 | 22.533 +0.154 | 33.721 | 29.890 | 18.692 | 1'44.836 1'44.990 | 24 | 0.154 |
| 25 21 HAUSMANN T. (CHE) | Tatuus F4-T421 | 22.476 | 33.783 +0.073 | 29.898 | 18.694 +0.086 | 1'44.851 1'45.010 | 25 | 0.159 |
| 26 27 ISCHER E. (CHE) | Tatuus F4-T421 | 22.403 | 33.729 | 30.124 | 18.684 | 1'44.940 1'44.940 | 23 | |
| 27 45 BEETON J. (AUS) | Tatuus F4-T421 | 22.491 | 33.760 +0.040 | 29.955 | 18.772 | 1'44.978 1'45.018 | 26 | 0.040 |
| 28 5 LARINI D. (ITA) | Tatuus F4-T421 | 22.622 +0.012 | 33.827 | 29.869 +0.194 | 18.783 +0.010 | 1'45.101 1'45.317 | 28 | 0.216 |
| 29 19 CARRASQUEDO J. (ME) | Tatuus F4-T421 | 22.636 | 33.838 +0.124 | 30.063 | 18.781 | 1'45.318 1'45.442 | 29 | 0.124 |
| 30 78 BLOKHINA V. | Tatuus F4-T421 | 22.607 +0.007 | 34.084 | 29.931 | 18.826 | 1'45.448 1'45.455 | 30 | 0.007 |
| 31 11 AKHMEDKHODJAEV I. | Tatuus F4-T421 | 22.683 | 34.013 | 30.035 +0.254 | 18.826 +0.046 | 1'45.557 1'45.857 | 33 | 0.300 |
| 32 93 QUINTARELLI M. (UAE) | Tatuus F4-T421 | 22.676 +0.001 | 33.869 +0.162 | 30.272 | 18.775 +0.092 | 1'45.592 1'45.847 | 32 | 0.255 |
| 33 76 NARAC R. (FRA) | Tatuus F4-T421 | 22.716 | 33.906 | 30.303 | 18.767 +0.008 | 1'45.692 1'45.700 | 31 | 0.008 |

21/04/2023





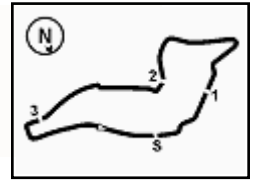
ACI Racing Weekend Imola, 22-23 Aprile 2023

Italian F4 Championship - Ideal Time Free Practice 2

 Imola Circuit 4.909 m
2 / 2

| No. Driver | Car | Seg. 1 | Seg. 2 | Seg. 3 | Seg. 4 | Ideal Time | | | |
|---------------------------|-------------------------------|----------------|------------------|------------------|------------------|------------------|-----------------|-------|-------|
| | | Diff. 1 | Diff. 2 | Diff. 3 | Diff. 4 | Best Lap | Pos. | Diff. | |
| 34 | 18 FRASSINETI A. (ITA) | Tatuus F4-T421 | 22.540 | 34.213 +0.031 | 30.326 +0.062 | 18.872 | 1'45.951 | 34 | 0.093 |
| 35 | 61 WIEBELHAUS F. (DEU) | Tatuus F4-T421 | 22.848 +0.142 | 34.197 +0.024 | 30.402 | 18.867 +0.147 | 1'46.314 | 35 | 0.313 |
| 36 | 63 LUCHETTI G. (ITA) | Tatuus F4-T421 | 22.884 | 34.430 | 30.698 +0.030 | 19.170 +0.093 | 1'47.182 | 36 | 0.123 |
| 37 | 62 QUONDAMCARLO M. () | Tatuus F4-T421 | 22.934 +0.151 | 34.664 +0.014 | 30.689 | 19.201 | 1'47.488 | 37 | 0.165 |
| Overall Ideal Time | | | 22.213 | 33.249 | 29.475 | 18.485 | 1'43.422 | | |





ACI Racing Weekend Imola, 22-23 Aprile 2023

Italian F4 Championship - Chronological Analysis Free Practice 2

Imola Circuit 4.909 m

1 / 6

3 U. UGOCHUKWU (1'43.656)

| Lap | Seg.1 | Seg.2 | Seg.3 | Seg.4 | Lap Time | km/h | Local Time |
|-----|---------------|---------------|---------------|---------------|-----------------|--------------|--------------|
| 1 | | 35.953 | 31.521 | 45.684 | 157,4 | 12:57'33.425 | |
| 2 | 59.577 | 36.093 | 30.938 | 18.777 | 2'25.385P | 166,9 | 12:59'58.810 |
| 3 | 22.742 | 33.871 | 29.858 | 18.776 | 1'45.247 | 238,4 | 13:01'44.057 |
| 4 | 22.444 | 33.571 | 29.828 | 18.585 | 1'44.428 | 237,9 | 13:03'28.485 |
| 5 | 22.355 | 33.993 | 30.212 | 18.595 | 1'45.155 | 241,1 | 13:05'13.640 |
| 6 | 22.356 | 33.603 | 29.759 | 18.584 | 1'44.302 | 238,4 | 13:06'57.942 |
| 7 | 22.325 | 33.623 | 29.753 | 36.824 | 2'02.525P | 242,7 | 13:09'00.467 |
| 8 | 9'03.231 | 36.928 | 31.904 | 19.430 | 10'31.493P | 144,2 | 13:19'31.960 |
| 9 | 23.210 | 34.358 | 30.315 | 18.686 | 1'46.569 | 228,8 | 13:21'18.529 |
| 10 | 22.448 | 33.603 | 29.723 | 18.584 | 1'44.358 | 241,1 | 13:23'02.887 |
| 11 | 22.250 | 33.328 | 29.524 | 18.554 | 1'43.656 | 238,4 | 13:24'46.543 |
| 12 | 22.214 | 33.450 | 38.030 | 18.622 | 1'52.316 | 243,2 | 13:26'38.859 |
| 13 | 22.689 | 43.227 | 1'06.491 | 41.165 | 2'53.572 | 243,2 | 13:29'32.431 |
| 14 | 1'05.469 | 40.779 | 30.513 | 18.584 | 2'35.345 | 59,2 | 13:32'07.776 |

| | | | | | | | |
|----|---------------|---------------|---------------|---------------|-----------------|--------------|--------------|
| 7 | 10'19.795 | 37.766 | 32.136 | 19.586 | 11'49.283P | 153,0 | 13:19'35.414 |
| 8 | 23.349 | 34.301 | 30.335 | 18.739 | 1'46.724 | 227,8 | 13:21'22.138 |
| 9 | 22.396 | 33.420 | 29.794 | 18.627 | 1'44.237 | 237,9 | 13:23'06.375 |
| 10 | 22.249 | 33.355 | 29.742 | 18.580 | 1'43.926 | 238,9 | 13:24'50.301 |
| 11 | 22.253 | 33.530 | 29.639 | 18.591 | 1'44.013 | 241,1 | 13:26'34.314 |
| 12 | 22.508 | 50.331 | 1'07.217 | 40.388 | 3'00.444 | 237,4 | 13:29'34.758 |
| 13 | 1'05.116 | 41.022 | 32.148 | 18.756 | 2'37.042 | 57,6 | 13:32'11.800 |

9 A. SPINA (1'44.462)

| Lap | Seg.1 | Seg.2 | Seg.3 | Seg.4 | Lap Time | km/h | Local Time |
|-----|---------------|---------------|---------------|---------------|-----------------|--------------|--------------|
| 1 | | | | | | | 12:55'32.444 |
| 2 | 47.233 | 35.984 | 31.667 | 59.472 | 2'54.356P | 162,9 | 12:58'26.800 |
| 3 | 1'47.249 | 34.972 | 30.890 | 38.816 | 3'31.927P | 169,0 | 13:01'58.727 |
| 4 | 53.261 | 34.601 | 30.441 | 18.971 | 2'17.274P | 170,3 | 13:04'16.001 |
| 5 | 22.568 | 34.184 | 30.215 | 18.904 | 1'45.871 | 242,7 | 13:06'01.872 |
| 6 | 22.452 | 34.268 | 31.679 | 18.947 | 1'47.346C | 242,2 | 13:07'49.218 |
| 7 | 22.528 | 33.925 | 29.955 | 18.765 | 1'45.173 | 238,4 | 13:09'34.391 |
| 8 | 22.510 | 33.901 | 29.960 | 18.988 | 1'45.359 | 241,1 | 13:11'19.750 |
| 9 | 22.782 | 34.110 | 30.048 | 3'35.873 | 5'02.813P | 238,9 | 13:16'22.563 |
| 10 | 43.686 | 39.267 | 33.249 | 20.084 | 2'16.286P | 154,5 | 13:18'38.849 |
| 11 | 23.497 | 35.184 | 31.102 | 18.944 | 1'48.727 | 234,3 | 13:20'27.576 |
| 12 | 22.638 | 34.024 | 41.145 | 19.025 | 1'56.832 | 239,5 | 13:22'24.408 |
| 13 | 22.601 | 33.705 | 29.817 | 18.667 | 1'44.790 | 238,4 | 13:24'09.198 |
| 14 | 22.395 | 33.695 | 29.690 | 18.682 | 1'44.462 | 242,2 | 13:25'53.660 |
| 15 | 22.398 | 33.607 | 29.671 | 23.214 | 1'48.890 | 241,6 | 13:27'42.550 |
| 16 | 1'01.386 | 1'15.092 | 59.007 | 19.042 | 3'34.527 | 70,7 | 13:31'17.077 |
| 17 | 22.568 | 33.841 | 47.785 | 41.342 | 2'25.536 | 238,4 | 13:33'42.613 |

10 V. KLUSS (1'44.515)

| Lap | Seg.1 | Seg.2 | Seg.3 | Seg.4 | Lap Time | km/h | Local Time |
|-----|---------------|---------------|---------------|---------------|-----------------|--------------|--------------|
| 1 | | | | | | | 12:55'10.959 |
| 2 | 45.598 | 38.556 | 36.033 | 21.727 | 2'21.914P | 135,5 | 12:57'32.873 |
| 3 | 27.957 | 38.495 | 34.914 | 20.761 | 2'02.127 | 167,7 | 12:59'35.000 |
| 4 | 27.671 | 37.441 | 33.592 | 19.208 | 1'57.912 | 173,6 | 13:01'32.912 |
| 5 | 22.782 | 34.264 | 30.175 | 18.904 | 1'46.125 | 236,3 | 13:03'19.037 |
| 6 | 22.607 | 34.099 | 30.150 | 18.792 | 1'45.648 | 236,3 | 13:05'04.685 |
| 7 | 22.615 | 34.080 | 29.994 | 18.800 | 1'45.489 | 238,9 | 13:06'50.174 |
| 8 | 22.541 | 34.099 | 29.969 | 18.917 | 1'45.526 | 242,2 | 13:08'35.700 |
| 9 | 22.548 | 34.081 | 29.943 | 18.942 | 1'45.514 | 240,5 | 13:10'21.214 |
| 10 | 22.741 | 34.201 | 30.090 | 4'55.613 | 6'22.645P | 243,2 | 13:16'43.859 |
| 11 | 41.322 | 37.255 | 31.722 | 19.836 | 2'10.135P | 151,7 | 13:18'53.994 |
| 12 | 23.211 | 34.633 | 30.543 | 18.914 | 1'47.301 | 232,8 | 13:20'41.295 |
| 13 | 22.544 | 33.922 | 30.095 | 18.778 | 1'45.339 | 238,9 | 13:22'26.634 |
| 14 | 22.461 | 33.763 | 29.725 | 18.705 | 1'44.654 | 239,5 | 13:24'11.288 |
| 15 | 22.326 | 33.728 | 29.758 | 18.703 | 1'44.515 | 242,7 | 13:25'55.803 |
| 16 | 22.408 | 33.735 | 29.912 | 22.252 | 1'48.307 | 241,6 | 13:27'44.110 |
| 17 | 1'01.341 | 1'17.894 | 58.261 | 19.115 | 3'36.611 | 72,1 | 13:31'20.721 |

11 I. AKHMEDKHODJAEV (1'45.857)

| Lap | Seg.1 | Seg.2 | Seg.3 | Seg.4 | Lap Time | km/h | Local Time |
|-----|--------|--------|--------|----------|-----------|-------|--------------|
| 1 | | | | | | | 12:55'20.335 |
| 2 | 43.762 | 39.561 | 34.145 | 20.468 | 2'17.936P | 148,6 | 12:57'38.271 |
| 3 | 26.711 | 36.866 | 34.186 | 19.828 | 1'57.591 | 178,2 | 12:59'35.862 |
| 4 | 23.295 | 34.884 | 30.717 | 18.996 | 1'47.892 | 234,3 | 13:01'23.754 |
| 5 | 22.912 | 34.479 | 30.375 | 18.863 | 1'46.629 | 237,9 | 13:03'10.383 |
| 6 | 23.086 | 34.787 | 33.564 | 19.124 | 1'50.561 | 239,5 | 13:05'00.944 |
| 7 | 22.901 | 34.468 | 30.489 | 18.985 | 1'46.843 | 240,5 | 13:06'47.787 |
| 8 | 22.778 | 34.315 | 30.335 | 19.027 | 1'46.455 | 239,5 | 13:08'34.242 |
| 9 | 22.745 | 34.314 | 30.360 | 19.015 | 1'46.434 | 239,5 | 13:10'20.676 |
| 10 | 23.355 | 34.927 | 30.524 | 3'44.098 | 5'12.904P | 237,9 | 13:15'33.580 |
| 11 | 45.741 | 42.140 | 36.209 | 21.943 | 2'26.033P | 141,7 | 13:17'59.613 |
| 12 | 26.366 | 37.801 | 32.597 | 19.461 | 1'56.225 | 175,6 | 13:19'55.838 |
| 13 | 23.912 | 37.213 | 31.697 | 18.949 | 1'51.771 | 233,3 | 13:21'47.609 |

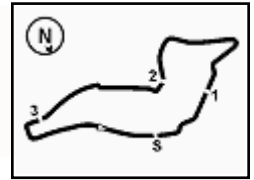
8 T. TAPONEN (1'43.926)

| Lap | Seg.1 | Seg.2 | Seg.3 | Seg.4 | Lap Time | km/h | Local Time |
|-----|--------|--------|--------|--------|-----------|--------------|--------------|
| 1 | | 36.247 | 31.977 | 19.281 | 162,2 | 12:58'40.134 | |
| 2 | 23.508 | 34.459 | 30.669 | 19.161 | 1'47.797 | 228,8 | 13:00'27.931 |
| 3 | 22.806 | 33.857 | 30.211 | 18.740 | 1'45.614 | 236,3 | 13:02'13.545 |
| 4 | 22.631 | 33.710 | 30.069 | 18.750 | 1'45.160 | 234,8 | 13:03'58.705 |
| 5 | 22.580 | 33.658 | 30.137 | 18.695 | 1'45.070 | 235,3 | 13:05'43.775 |
| 6 | 22.395 | 33.640 | 29.807 | 36.514 | 2'02.356P | 236,3 | 13:07'46.131 |

21/04/2023

P = Pits In/Out - C = Lap Time Cancelled





ACI Racing Weekend Imola, 22-23 Aprile 2023

Italian F4 Championship - Chronological Analysis Free Practice 2

| | | | | | | | | | | | | | | | |
|----|---------------|---------------|---------------|---------------|-----------------|--------------|--------------|--------------------------------|---------------|---------------|---------------|---------------|-----------------|-------|--------------|
| 5 | 22.689 | 36.816 | 30.872 | 18.760 | 1'49.137 | 235,3 | 13:03'43.994 | 12 | 22.229 | 33.453 | 29.475 | 18.486 | 1'43.643 | 241,6 | 13:24'55.842 |
| 6 | 22.786 | 34.375 | 30.427 | 18.826 | 1'46.414 | 233,8 | 13:05'30.408 | 13 | 22.213 | 33.317 | 29.659 | 18.610 | 1'43.799 | 242,2 | 13:26'39.641 |
| 7 | 22.664 | 33.924 | 30.222 | 18.896 | 1'45.706 | 234,8 | 13:07'16.114 | 45 J. BEETON (1'45.018) | | | | | | | |
| 8 | 22.666 | 34.119 | 30.688 | 18.861 | 1'46.334 | 234,8 | 13:09'02.448 | Lap | Seg.1 | Seg.2 | Seg.3 | Seg.4 | Lap Time | km/h | Local Time |
| 9 | 22.756 | 34.100 | 33.101 | 18.933 | 1'48.890 | 233,8 | 13:10'51.338 | 1 | | | | | | | 12:55'17.732 |
| 10 | 22.727 | 34.351 | 30.160 | 6'29.318 | 7'56.556P | 232,8 | 13:18'47.894 | 2 | 44.713 | 39.137 | 35.003 | 20.987 | 2'19.840P | 152,3 | 12:57'37.572 |
| 11 | 40.637 | 38.452 | 33.034 | 20.064 | 2'12.187P | 166,2 | 13:21'00.081 | 3 | 26.568 | 37.210 | 34.054 | 41.511 | 2'19.343P | 186,5 | 12:59'56.915 |
| 12 | 23.985 | 35.051 | 31.327 | 19.068 | 1'49.431 | 222,7 | 13:22'49.512 | 4 | 1'15.378 | 37.291 | 33.053 | 18.852 | 2'44.574P | 166,9 | 13:02'41.489 |
| 13 | 23.683 | 35.998 | 32.203 | 19.000 | 1'50.884 | 235,8 | 13:24'40.396 | 5 | 22.581 | 34.011 | 30.204 | 18.866 | 1'45.662 | 237,9 | 13:04'27.151 |
| 14 | 22.403 | 33.729 | 30.124 | 18.684 | 1'44.940 | 238,4 | 13:26'25.336 | 6 | 23.360 | 36.276 | 34.201 | 18.987 | 1'52.824C | 238,9 | 13:06'19.975 |
| 15 | 22.469 | 33.776 | 40.540 | 38.604 | 2'15.389 | 239,5 | 13:28'40.725 | 7 | 22.619 | 34.194 | 30.071 | 18.901 | 1'45.785 | 238,4 | 13:08'05.760 |
| 16 | 56.497 | 1'12.383 | 32.402 | 18.840 | 3'00.122 | 84,2 | 13:31'40.847 | 8 | 22.646 | 34.086 | 31.099 | 6'16.180 | 7'44.011CP | 238,4 | 13:15'49.771 |

29 A. ELKIN (1'44.415)

| Lap | Seg.1 | Seg.2 | Seg.3 | Seg.4 | Lap Time | km/h | Local Time |
|-----|---------------|---------------|---------------|---------------|-----------------|--------------|--------------|
| 1 | | | | | | | 12:55'49.829 |
| 2 | 41.283 | 36.068 | 31.441 | 53.932 | 2'42.724P | 165,1 | 12:58'32.553 |
| 3 | 1'55.758 | 35.248 | 30.893 | 36.983 | 3'38.882P | 162,9 | 13:02'11.435 |
| 4 | 48.788 | 34.295 | 30.234 | 18.777 | 2'12.094P | 148,1 | 13:04'23.529 |
| 5 | 22.566 | 33.934 | 31.334 | 18.815 | 1'46.649 | 242,2 | 13:06'10.178 |
| 6 | 22.606 | 33.851 | 30.133 | 18.689 | 1'45.279 | 241,1 | 13:07'55.457 |
| 7 | 22.526 | 33.921 | 30.164 | 18.713 | 1'45.324 | 240,5 | 13:09'40.781 |
| 8 | 22.587 | 33.970 | 30.066 | 18.808 | 1'45.431 | 240,0 | 13:11'26.212 |
| 9 | 22.610 | 33.838 | 29.946 | 18.759 | 1'45.153 | 239,5 | 13:13'11.365 |
| 10 | 22.532 | 34.096 | 30.208 | 2'31.060 | 3'57.896P | 238,9 | 13:17'09.261 |
| 11 | 42.244 | 37.939 | 31.992 | 19.283 | 2'11.458P | 127,2 | 13:19'20.719 |
| 12 | 24.166 | 37.335 | 30.944 | 19.087 | 1'51.532 | 218,6 | 13:21'12.251 |
| 13 | 23.310 | 33.834 | 30.953 | 18.672 | 1'46.769 | 211,8 | 13:22'59.020 |
| 14 | 22.409 | 33.574 | 29.830 | 18.602 | 1'44.415 | 243,2 | 13:24'43.435 |
| 15 | 22.403 | 33.942 | 30.646 | 18.880 | 1'45.871 | 243,2 | 13:26'29.306 |
| 16 | 22.350 | 33.572 | 54.480 | 38.212 | 2'28.614 | 243,2 | 13:28'57.920 |
| 17 | 54.779 | 1'02.714 | 32.096 | 19.054 | 2'48.643 | 83,7 | 13:31'46.563 |

47 N. LACORTE (1'44.316)

| Lap | Seg.1 | Seg.2 | Seg.3 | Seg.4 | Lap Time | km/h | Local Time |
|-----|---------------|---------------|---------------|---------------|-----------------|--------------|--------------|
| 1 | | | | | | | 12:55'04.826 |
| 2 | 23.570 | 37.246 | 30.873 | 20.459 | 1'52.148 | 228,8 | 13:00'50.701 |
| 3 | 22.796 | 34.091 | 30.080 | 18.658 | 1'45.625 | 235,3 | 13:02'36.326 |
| 4 | 22.735 | 34.588 | 30.232 | 18.716 | 1'46.271 | 237,9 | 13:04'22.597 |
| 5 | 22.569 | 33.878 | 33.269 | 19.708 | 1'49.424 | 237,4 | 13:06'12.021 |
| 6 | 22.571 | 33.769 | 30.079 | 18.628 | 1'45.047 | 239,5 | 13:07'57.068 |
| 7 | 22.516 | 33.689 | 29.962 | 36.960 | 2'03.127P | 240,5 | 13:10'00.195 |
| 8 | 8'34.433 | 37.146 | 32.428 | 19.399 | 10'03.406P | 143,8 | 13:20'03.601 |
| 9 | 23.276 | 34.567 | 31.383 | 19.354 | 1'48.580 | 236,3 | 13:21'52.181 |
| 10 | 22.744 | 33.866 | 30.289 | 18.627 | 1'45.526 | 238,4 | 13:23'37.707 |
| 11 | 22.488 | 33.564 | 29.703 | 18.561 | 1'44.316 | 238,9 | 13:25'22.023 |
| 12 | 22.423 | 33.589 | 32.314 | 18.707 | 1'47.033 | 240,5 | 13:27'09.056 |
| 13 | 24.043 | 1'07.818 | 1'06.875 | 47.291 | 3'26.027 | 237,9 | 13:30'35.083 |
| 14 | 37.434 | 35.127 | 30.029 | 38.056 | 2'20.646 | 144,4 | 13:32'55.729 |

48 J. EGOZI (1'44.637)

| Lap | Seg.1 | Seg.2 | Seg.3 | Seg.4 | Lap Time | km/h | Local Time |
|-----|---------------|---------------|---------------|---------------|-----------------|--------------|--------------|
| 1 | | | | | | | 12:55'09.355 |
| 2 | 44.171 | 36.779 | 32.330 | 58.699 | 2'51.979P | 140,6 | 12:58'01.334 |
| 3 | 1'56.610 | 35.114 | 30.450 | 18.999 | 3'21.173P | 162,2 | 13:01'22.507 |
| 4 | 22.766 | 34.161 | 30.212 | 18.928 | 1'46.067 | 235,3 | 13:03'08.574 |
| 5 | 22.664 | 34.171 | 29.901 | 18.953 | 1'45.689 | 235,8 | 13:04'54.263 |
| 6 | 22.570 | 33.994 | 29.937 | 18.907 | 1'45.408 | 236,8 | 13:06'39.671 |
| 7 | 22.496 | 34.127 | 29.891 | 18.899 | 1'45.413C | 236,8 | 13:08'25.084 |
| 8 | 22.686 | 34.184 | 30.543 | 18.981 | 1'46.394 | 237,4 | 13:10'11.478 |
| 9 | 22.610 | 34.128 | 29.881 | 18.968 | 1'45.587 | 236,3 | 13:11'57.065 |
| 10 | 22.694 | 34.652 | 30.269 | 6'32.215 | 7'59.830P | 235,3 | 13:19'56.895 |
| 11 | 42.399 | 36.782 | 33.654 | 19.414 | 2'12.249P | 150,0 | 13:22'09.144 |
| 12 | 22.973 | 35.000 | 32.095 | 19.458 | 1'49.526 | 236,3 | 13:23'58.670 |
| 13 | 22.788 | 34.067 | 30.052 | 18.839 | 1'45.746 | 238,4 | 13:25'44.416 |
| 14 | 22.414 | 33.717 | 29.722 | 18.784 | 1'44.637 | 238,9 | 13:27'29.053 |
| 15 | 48.010 | 1'04.576 | 1'00.983 | 34.280 | 3'27.849 | 71,3 | 13:30'56.902 |

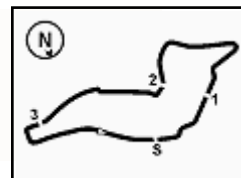
57 N. BHIROMBHAKDI (1'45.038)

| Lap | Seg.1 | Seg.2 | Seg.3 | Seg.4 | Lap Time | km/h | Local Time |
|-----|--------|--------|--------|--------|-----------|-------|--------------|
| 1 | | | | | | | 12:55'12.263 |
| 2 | 42.469 | 35.910 | 31.381 | 19.560 | 2'09.320P | 152,3 | 12:57'21.583 |
| 3 | 25.529 | 34.915 | 30.570 | 19.040 | 1'50.054 | 197,4 | 12:59'11.637 |
| 4 | 22.739 | 34.342 | 30.105 | 18.953 | 1'46.139C | 236,3 | 13:00'57.776 |

21/04/2023

P = Pits In/Out - C = Lap Time Cancelled





ACI Racing Weekend Imola, 22-23 Aprile 2023

Italian F4 Championship - Chronological Analysis Free Practice 2

85 M. DE PALO (1'44.720)

| Lap | Seg.1 | Seg.2 | Seg.3 | Seg.4 | Lap Time | km/h | Local Time |
|-----|---------------|---------------|---------------|---------------|-----------------|--------------|--------------|
| 1 | | | | | | | 12:55'22.888 |
| 2 | 42.454 | 36.811 | 32.186 | 51.057 | 2'42.508P | 164,6 | 12:58'05.396 |
| 3 | 1'01.832 | 35.014 | 31.465 | 19.555 | 2'27.866P | 170,9 | 13:00'33.262 |
| 4 | 23.693 | 34.475 | 30.993 | 18.944 | 1'48.105 | 220,4 | 13:02'21.367 |
| 5 | 22.752 | 33.983 | 30.438 | 18.838 | 1'46.011 | 236,8 | 13:04'07.378 |
| 6 | 22.973 | 34.167 | 30.182 | 18.831 | 1'46.153C | 243,2 | 13:05'53.531 |
| 7 | 22.710 | 33.986 | 30.164 | 18.765 | 1'45.625 | 236,3 | 13:07'39.156 |
| 8 | 22.634 | 34.637 | 30.041 | 18.943 | 1'46.255 | 235,3 | 13:09'25.411 |
| 9 | 22.688 | 34.073 | 30.051 | 18.782 | 1'45.594 | 234,8 | 13:11'11.005 |
| 10 | 22.656 | 33.885 | 30.055 | 18.741 | 1'45.337 | 236,3 | 13:12'56.342 |
| 11 | 22.612 | 33.914 | 30.001 | 4'47.332 | 6'13.859P | 236,8 | 13:19'10.201 |
| 12 | 39.980 | 36.426 | 31.825 | 19.442 | 2'07.673P | 163,1 | 13:21'17.874 |
| 13 | 23.988 | 34.708 | 32.034 | 18.818 | 1'49.548 | 231,8 | 13:23'07.422 |
| 14 | 22.556 | 33.668 | 29.878 | 18.631 | 1'44.733 | 239,5 | 13:24'52.155 |
| 15 | 22.480 | 33.672 | 29.837 | 18.731 | 1'44.720 | 238,4 | 13:26'36.875 |
| 16 | 22.747 | 39.252 | 1'03.203 | 38.569 | 2'43.771 | 236,3 | 13:29'20.646 |
| 17 | 1'09.557 | 47.024 | 30.733 | 18.797 | 2'46.111 | 64,7 | 13:32'06.757 |

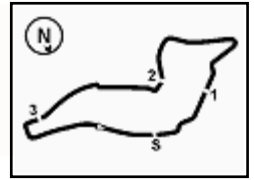
88 G. PEBBLES (1'44.751)

| Lap | Seg.1 | Seg.2 | Seg.3 | Seg.4 | Lap Time | km/h | Local Time |
|-----|---------------|---------------|---------------|---------------|-----------------|--------------|--------------|
| 1 | | | | | | | 12:55'49.072 |
| 2 | 43.032 | 37.503 | 32.124 | 19.515 | 2'12.174P | 163,1 | 12:58'01.246 |
| 3 | 23.761 | 34.979 | 31.284 | 20.087 | 1'50.111 | 230,3 | 12:59'51.357 |
| 4 | 23.278 | 34.821 | 30.662 | 19.321 | 1'48.082 | 233,3 | 13:01'39.439 |
| 5 | 22.707 | 34.015 | 30.296 | 18.841 | 1'45.859 | 235,3 | 13:03'25.298 |
| 6 | 22.686 | 33.835 | 30.081 | 18.912 | 1'45.514 | 237,4 | 13:05'10.812 |
| 7 | 22.579 | 33.903 | 30.007 | 18.834 | 1'45.323 | 236,8 | 13:06'56.135 |
| 8 | 22.646 | 33.874 | 30.082 | 18.800 | 1'45.402 | 237,4 | 13:08'41.537 |
| 9 | 23.956 | 34.355 | 30.306 | 7'19.252 | 8'47.869P | 216,0 | 13:17'29.406 |
| 10 | 44.286 | 36.752 | 32.736 | 19.283 | 2'13.057P | 161,0 | 13:19'42.463 |
| 11 | 23.432 | 34.533 | 31.335 | 19.735 | 1'49.035 | 225,5 | 13:21'31.498 |
| 12 | 22.439 | 34.095 | 30.127 | 18.655 | 1'45.316 | 243,2 | 13:23'16.814 |
| 13 | 22.533 | 33.863 | 29.776 | 19.038 | 1'45.210 | 243,2 | 13:25'02.024 |
| 14 | 22.374 | 33.745 | 29.872 | 18.760 | 1'44.751 | 243,8 | 13:26'46.775 |
| 15 | 22.472 | 39.053 | 1'06.745 | 40.464 | 2'48.734 | 241,6 | 13:29'35.509 |
| 16 | 1'05.237 | 40.658 | 32.534 | 18.759 | 2'37.188 | 56,8 | 13:32'12.697 |

93 M. QUINTARELLI (1'45.847)

| Lap | Seg.1 | Seg.2 | Seg.3 | Seg.4 | Lap Time | km/h | Local Time |
|-----|---------------|---------------|---------------|---------------|-----------------|--------------|--------------|
| 1 | | | | | | | 12:55'24.447 |
| 2 | 42.474 | 37.602 | 34.135 | 49.329 | 2'43.540P | 155,8 | 12:58'07.987 |
| 3 | 1'59.306 | 37.257 | 33.138 | 38.267 | 3'47.968P | 157,9 | 13:01'55.955 |
| 4 | 51.593 | 37.858 | 32.880 | 39.844 | 2'42.175P | 134,5 | 13:04'38.130 |
| 5 | 51.776 | 35.566 | 32.660 | 19.622 | 2'19.624P | 164,4 | 13:06'57.754 |
| 6 | 24.789 | 36.404 | 32.168 | 8'08.572 | 9'41.933P | 224,1 | 13:16'39.687 |
| 7 | 41.691 | 38.719 | 33.708 | 21.312 | 2'15.430P | 149,8 | 13:18'55.117 |
| 8 | 24.808 | 36.223 | 32.899 | 19.740 | 1'53.670 | 208,9 | 13:20'48.787 |
| 9 | 24.100 | 35.063 | 31.573 | 18.975 | 1'49.711 | 219,1 | 13:22'38.498 |
| 10 | 22.677 | 34.397 | 30.295 | 18.775 | 1'46.144 | 238,9 | 13:24'24.642 |
| 11 | 22.677 | 34.031 | 30.272 | 18.867 | 1'45.847 | 236,3 | 13:26'10.489 |
| 12 | 22.676 | 33.869 | 33.303 | 32.806 | 2'02.654 | 237,9 | 13:28'13.143 |
| 13 | 48.805 | 1'09.476 | 55.028 | 20.513 | 3'13.822 | 96,5 | 13:31'26.965 |

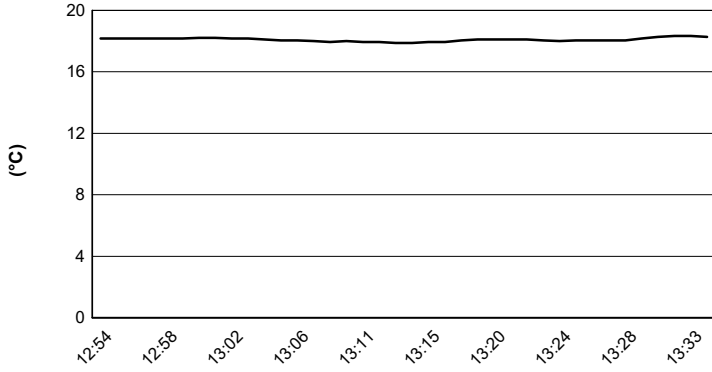




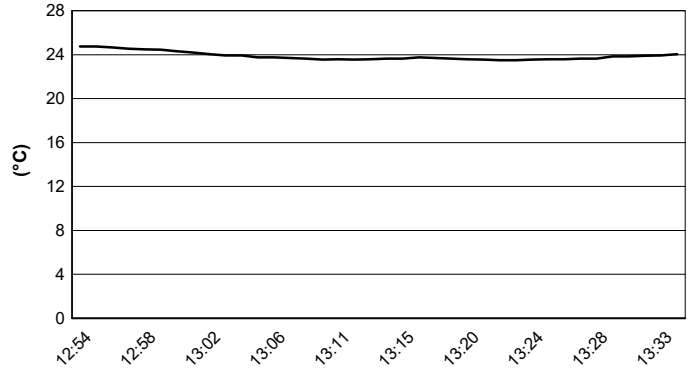
Imola Circuit 4.909 m

ACI Racing Weekend Imola, 22-23 Aprile 2023
Italian F4 Championship - Weather Report Free Practice 2
 Session started 12:55 - Session ended 13:35

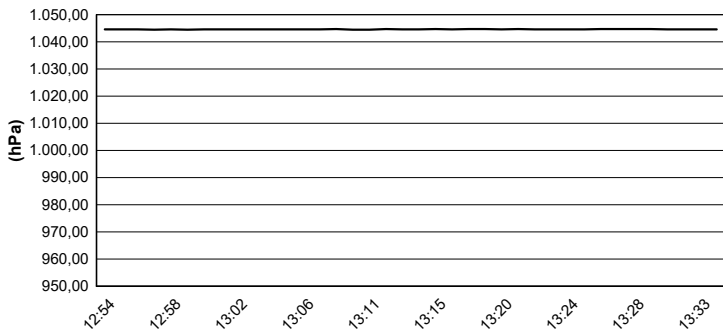
Air Temperature



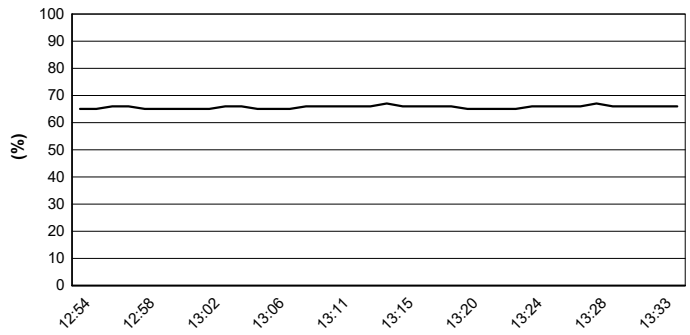
Track Temperature



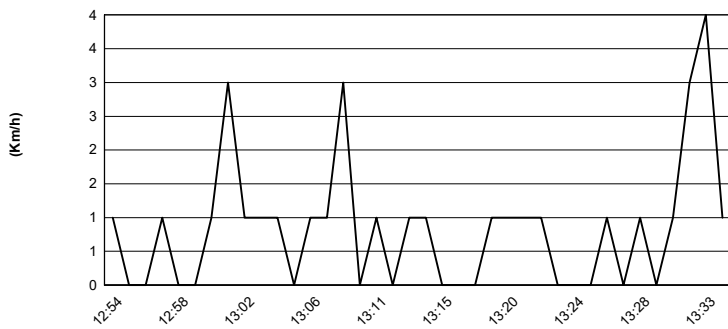
Air Pressure



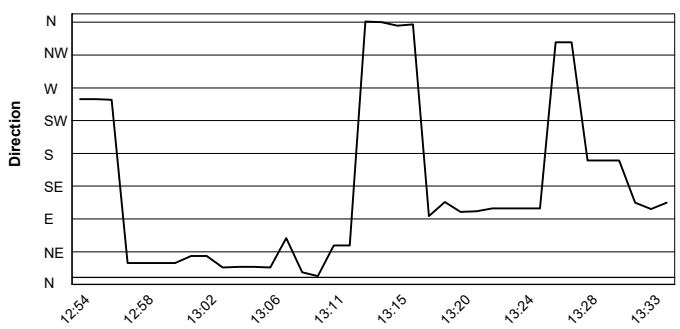
Humidity



Wind Speed



Wind Direction



21/04/2023

